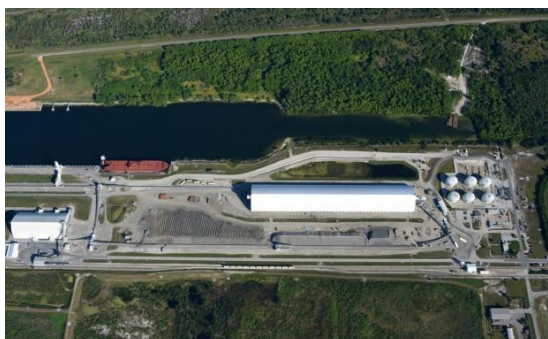




Big Bend Marine Terminal



Facility Location: 12839 Wyandotte Road
Gibsonton, FL 33534

Phone Number: 813.675.0927

General Manager: Brady Breaux, 813.500.6557

Public Affairs: Sarah Fedorchuk, 813.523.7362

Community Relations: Jackie Barron, 941.356.0045

Year Operations Began	Number of Employees
1975	Total: 30 Mosaic: 30 Contract: 0

Current Activities	Finished Products of Plant
Big Bend Marine Terminal receives, stores and ships wet rock and finished fertilizer products via barges and vessels. Wet rock is transported via vessels to Louisiana plants where it is processed into concentrate products which are then barged up the Mississippi River to farm belt states. Finished fertilizer products are shipped to the Gulf Coast, Corn Belt, and export markets	

Total Actual Shipments 2023	Power
520,699 Tons – Finished Products	

On-site Dry Product Warehouse Capacity	Transportation for Outgoing Products
Warehouse 1 - 30,000 tons HARP Warehouse - 110,000 tons – (in 8 storage bins)	Oceangoing barges and vessels

Finished Product Destinations	Principal End-Use Markets for Products
Finished chemical products - Mississippi River and foreign exports	

For additional information, please email Public.Affairs@mosaicco.com